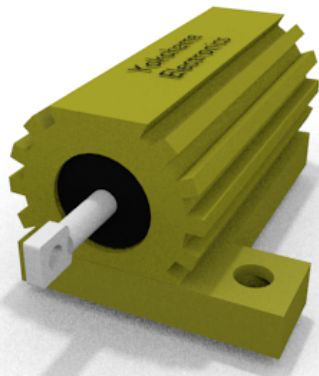


## JHA series / Aluminium Housed, Chassis Mount



## 特徴

- ・定格電力 25W ~ 50W
- ・アルミケース構造
- ・使用中の安定性に極めて優れます。
- ・無誘導、高精度タイプ
- ・溶接構造による最高の信頼性
- ・モールド封止による優れた環境耐性
- ・溶接構造で高性能品に対応
- ・参考規格
  - ・BS CECC 40203-001
  - ・MIL-R-18546

## Features

- ・External Aluminium Encasing
- ・Power Rating 25W, 50W.
- ・Excellent Stability in Operation.
- ・Non-Inductive and Close Tolerance Types.
- ・All Welded Construction for Maximum Reliability
- ・Moulded Construction for Excellent Environmental Protection.
- ・Reference Standards
  - ・BS CECC 40203-001
  - ・MIL-R-18546

## 仕様・環境特性 / Electrical Specifications and Environmental Characteristics

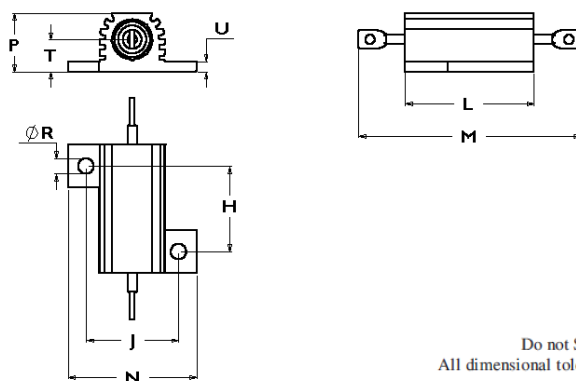
Electrical Specifications	JHA25	JHA50
Tolerance	± 0.05%, ± 0.1%, ± 0.25%, ± 0.5%, ± 1%, ± 2%, ± 3%, ± 5%, ± 10%	
TCR	For <10 Ohms: < ± 100ppm/°C ; For >10 Ohms: < ± 50ppm/°C	
Resistance Range	R051 - 20K	R010 - 100K
Dielectric Strength	2500 V	2500 V
Max. Working Voltage	2500 V	1250 V
Surface Temp. Rise Mounted on a Std. Heat Sink in °C / Watt	4	2.9
Std. Heat Sink Area	535 cm <sup>2</sup>	535 cm <sup>2</sup>
Std. Heat Sink Thickness	1 mm	1 mm
Approx. Weight	12.5 gm	29 gm
Dissipation @ 25 °C (With Heat Sink)	25 W	50 W
Dissipation @ 25 °C (Without Heat Sink)	12.5	20
Stability at Rated Power	± 1%	± 1%
CECC Style Reference	CA	DA
MIL - Style	RE70	RE75
Climatic Category	55/200/56	55/200/56

## 性能 / Performance characteristics

Test Methods	Test Conditions	Test Limits
Endurance at Room Temperature	As per BS-CECC (1.5Hrs ON, 0.5Hrs OFF for 1000Hrs)	ΔR < 1% +0R05
Short Term Overload	5 x Rated Power or Isolation Voltage (Lesser of the two Voltages)	ΔR < 1% +0R05
Robustness of Terminations	As per BS-CECC-4.14.2, 20N Tensile Force	ΔR < 0.25% +0R05
Resistance to Soldering Heat	As per BS-CECC-4.15.2, 260 °C, 10 Seconds	ΔR < 0.25% +0R05
Rapid Change of Temperature	-55 °C/200 °C, 5 Cycles as per BS-CECC-4.16	ΔR < 0.25% +0R05
Bump	4000 Bumps at 40g as per Clause 4.17	ΔR < 0.25% +0R05
Vibration	10Hz to 500Hz, 0.75mm Amplitude or 10g, 6 hrs	ΔR < 0.25% +0R05
Damp Heat Steady State	90-95% RH, 40 °C, 56 Days Clause 4.21	ΔR < 1% +0R05

## JHA series / Aluminium Housed, Chassis Mount

## 寸法 / Dimension



In mm

Type	H ± 0.3	J ± 0.3	L		M Max	N Nom	P Max	R		T ± 0.3	U	
			Max	Nom				Min	Nom		Max	Nom
JHA25	18.3	19.8	29	27.5	51.8	28	15	2.8	3.3	6.7	3.2	2
JHA50	39.7	21.4	51	50	72.5	30	17	2.8	3.3	7.9	3.2	2.3

In inches

Type	H ± 0.012	J ± 0.012	L		M Max	N Nom	P Max	R		T ± 0.012	U	
			Max	Nom				Min	Nom		Max	Nom
JHA25	0.72	0.78	1.142	1.082	2.039	1.102	0.59	0.11	0.13	0.283	0.126	0.079
JHA50	1.563	0.843	2.008	1.969	2.854	1.181	0.669	0.11	0.13	0.311	0.126	0.091

## 品番構成 / Ordering Code

Type	Ohmic Value	Tolerance	Packing Style	Release Condition	Special Requirements
JHA25	0.1 Ohm :0R1 / R10	1% : F	Bulk : B	Commercial : X	Standard : S
	1 Ohm : 1R0	2% : G		CECC : F	Others : M
	1 KOhm : 1K0	5% : J		MIL : M	
	10.7 KOhm : 10K7	10% : K		JSS : J	

## 注意事項 / Note

- On request we undertake tests for Batch Acceptance to a specified Reference Standard.
- The Derating Curve specifies the maximum allowable Power at a particular ambient temperature while ensuring that the maximum surface temperature remains within the designed limit.
- When the Resistor is subjected to a Pulse Load, please ensure that the *average* Power dissipated remains below the rated Power specified.
- Resistor performance with Pulse Loads will have to be application tested. Please utilise our Pulse Application Questionnaire for selecting a suitable type or for requesting any design-in assistance from us.